

Step 4:

It is possible to use the small or large parts to create earrings, a pendant for a mobile phone or a necklace on a chain. Use the created central opening. Thread rings through it. You can stick the small part to a clasp.



Design by Helena Chmelíková

PRECIOSA Chilli™

111 01 357; 4 x 11 mm



PRECIOSA Rocailles

331 19 001; 6/0 311 19 001; 6/0



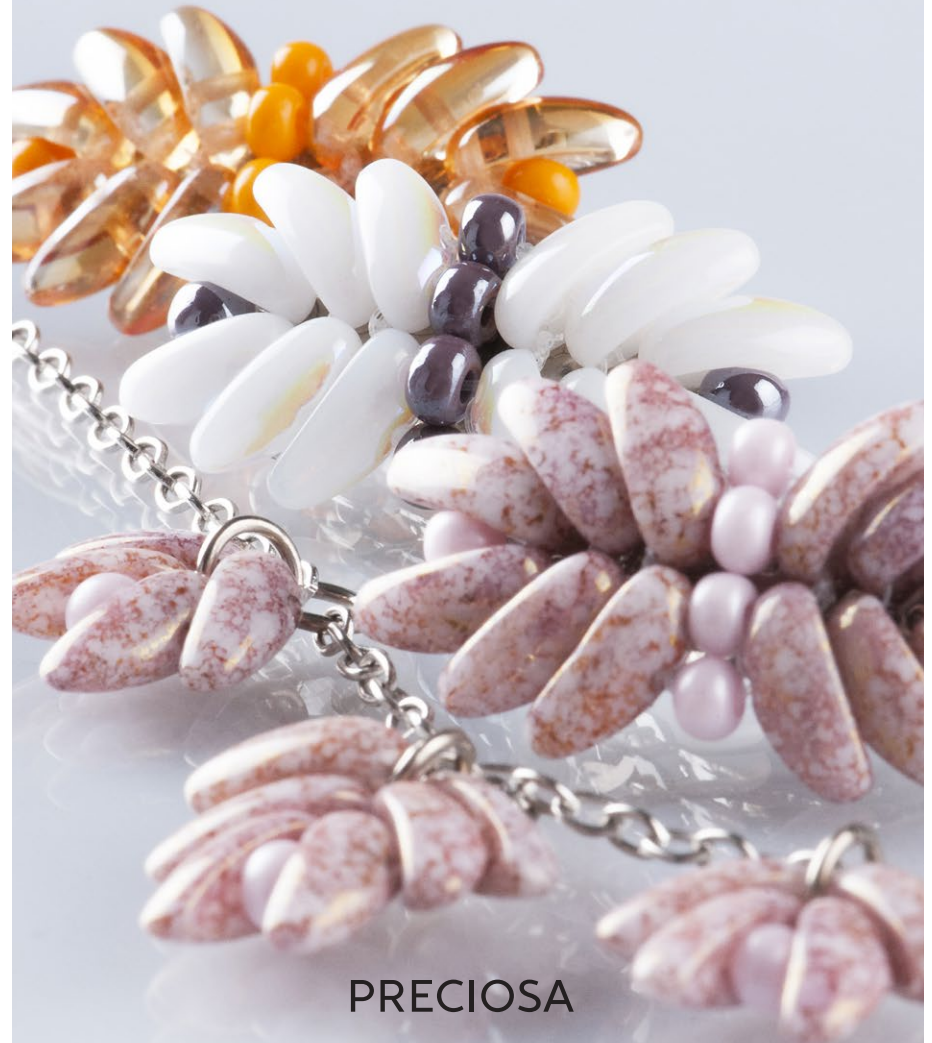
Preciosa Ornela introduces beads and seed beads from the PRECIOSA Traditional Czech Beads™ brand.

Preciosa-Ornela.com



DELICATE THINGS MADE USING PRECIOSA CHILLI™ BEADS

Pinch of *chilli*



PRECIOSA

Pinch of chilli

Preciosa Ornela presents the PRECIOSA Chilli™ Pressed Bead from the PRECIOSA Traditional Czech Beads™ brand. The elongated imaginative shape supplements the popular range of two-hole beads with which it has an identical hole spacing. The axially deviated holes predestine this bead for simple compositions in the form of a zip in the case of a regular stringing on a strong or flexible material, during which the ridge of the bead excellently interlocks into the side groove of the adjacent one. The flattened shape and the side orientation of the holes enable the creation of flat relief applications in combination with round beads and seed beads up to a size of 4 mm. It is also suitable for use with the PRECIOSA Pip™, PRECIOSA Solo™ or PRECIOSA Thorn™ beads. This bead is suitable for all types of surface finishes.

Materials and tools:

PRECIOSA Chilli™ (Ch)

111 01 357; 4 x 11 mm;
02010/15495 pink



02010/28701 white



00030/29121 orange
4x for the small part;
6x for the large part;
12x for the clasp



PRECIOSA Rocailles (R6)

331 19 001; 6/0;

16298 pink



28020 purple



PRECIOSA Rocailles (R6)

311 19 001; 6/0;
93110 orange
1x for the small part;
1x for the large part;
6x for the clasp



the earrings:
earring hooks, 6 mm rings



the pendant:
a cord with an end piece, 6 mm rings



the clasp:
glue for non-absorbent material,
a 2.7 cm long French clasp




the necklace:
a chain, 6 mm rings, ovals, a carabiner,
a counter-ring



- a 0.20 mm nylon line; a thin needle;
scissors; flat nose pliers (for flattening
the end of the line and closing the rings);
snipping pliers



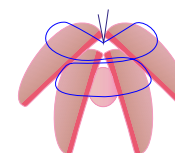
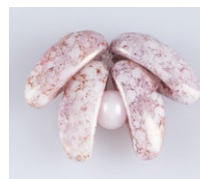
Difficulty: 

Technique: basic beadweaving

Procedure:

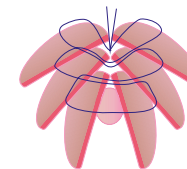
The small part

Step 1:
String 1x Ch. Start by threading the line through the outer hole from the inside in the direction from the dimple. Thread the line through the central hole from outside on the arch. String 2x Ch. Thread the line through the outer hole from the outside and through the second hole from the inside. Thread the line through the central hole from the outside at the second bead. String 1x R6. Thread the line through the second hole of the adjacent Ch. Once again, thread the line through the outer holes of the two strung Ch. String 1x Ch. Thread the line through the central hole from the inside. Thread the line through the outer hole from the outside. Tie off the ends of the lines with three knots. Cut it off 1 to 2 mm from the knots.



The large part

Step 2:
Use the same procedure as you used to make the small part. However, string a further 2x Ch instead of the R6. Then insert 1x R6 between them.



The hair clasp

Step 3:
Create two large parts.
Connect them with rocailles.
Thread the line through the central hole from the outside of one upper Ch. Thread the line through the outer hole of the same Ch from the inside. String 1x R6. In the second part, thread the line through the outer hole of the adjacent Ch from the outside. Move to the second upper Ch in the adjacent part. Thread the line through the outer hole from the inside. String 1x R6. Pass to the second top Ch in the initial part. Thread the line through the outer hole from the outside. Then thread the line through the central hole from the inside. String 1x R6. Thread the line through both holes of the top Ch in the adjacent part. Thread the line through the R6 again. Thread the line through the outer hole of both Ch from the initial part. Thread the line through the R6. Add both holes of the adjacent Ch again. String 1x R6. Tie off the ends of the lines with three knots and pull them into the surrounding beads. Cut it off. Stick it onto the clasp.

